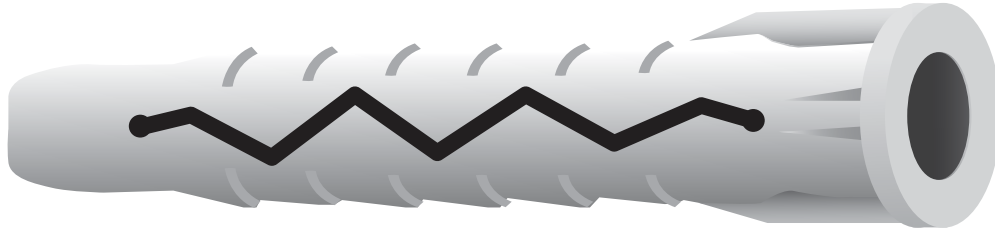


UNIVERSAL PLUG

A UNIQUE NYLON WALL INSERT THAT CAN BE USED WITH HOLLOW OR SOLID MATERIAL



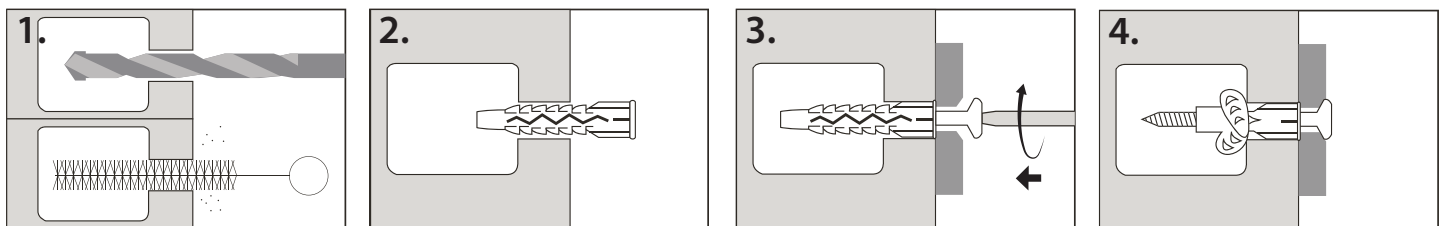
FORTRESS Universal Plugs are a unique Nylon wall insert for light duty fixing that can be used with hollow OR solid material such as concrete, solid/hollow brick, plasterboard, stone. Even thin materials such as plastic and plywood.

Description (with screw type)	Concrete		Solid Brick		Hollow Brick		Plasterboard	
	Tensile (kN)	Shear (kN)	Tensile (kN)	Shear (kN)	Tensile (kN)	Shear (kN)	Tensile (kN)	Shear (kN)
6 x 33 ø4 chip	0.15	0.36	0.15	0.35	0.08	0.35	0.05	0.12
6 x 33 ø5 wood	0.95	0.75	0.8	0.5	0.24	0.35	0.06	0.15
6 x 45 ø4 chip*	0.2	0.36	0.18	0.35	0.18	0.35	0.05	0.12
6 x 45 ø5 wood*	0.95	0.75	0.9	0.7	0.28	0.35	0.07	0.15
8 x 52 ø5 chip*	0.3	0.5	0.28	0.5	0.28	0.35	0.07	0.2
8 x 52 ø5 wood*	0.9	0.9	0.85	0.85	0.32	0.4	0.1	0.2

* Only available in Pro-Pak. All items subject to availability.

Installation Guide: Drill out hole for fixing. Clean out debris. Insert Universal plug. Place fixing and screw through into the Universal plug until fixing is held firmly in place.

Fixing to hollow or thin material



Fixing to solid material

